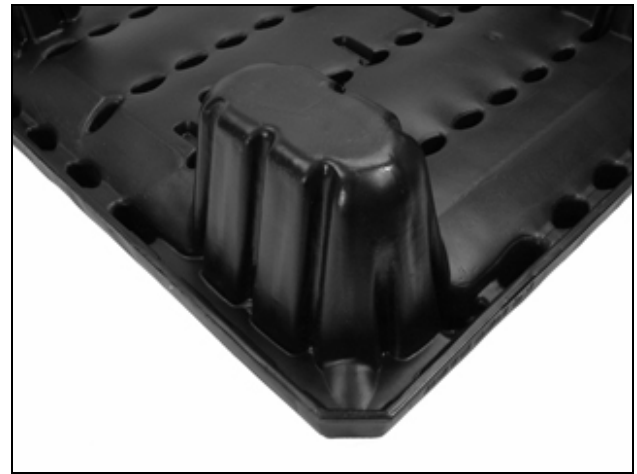


Uni-Pallet® 44 x 48



Uni-Pallet® Features

- New shock absorbing perimeter design virtually eliminates side splitting due to the rigors of side impact and fork truck handling
- New 45° corner design
- Nestable with other plastic pallets (twin sheet and injection molded pallets) so you can upgrade your fleet to the Uni-Pallet
- Four-way fork entry for ease in handling with Fork Trucks and Pallet Jacks
- Lightweight
- Nestable which results in reductions in warehousing costs and freight costs
- Drain holes in legs to ease in cleaning and deter any collection of liquid
- Easy to clean flat deck surface
- Impervious to weather – including extreme heat or cold and UV Ray protection
- 100 percent recyclable
- Twin Sheet construction eliminates the need for repair and reduces product damage
- Conveyable
- Extremely durable



Uni-Pallet® Options

- Steel inserts in either or both directions
- Anti-skid surfaces available
- Custom Color(s)
- Identification Stripes
- Identify your fleet with custom name plates and company logo
- Available in various weights depending upon load requirements

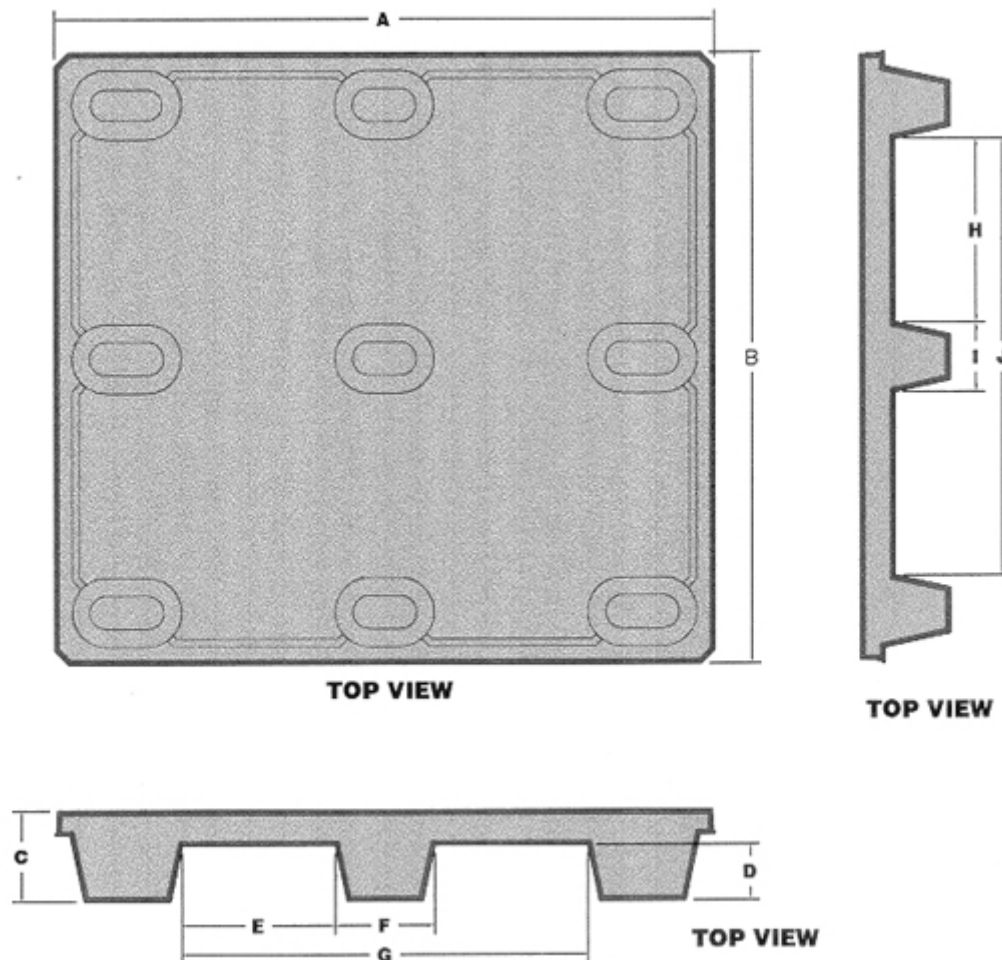
The Uni-Pallet offers outstanding economy along with its strength and durability. The space saving stacking feature and its lightweight combine to reduce a shipper's cost per trip. This produces the ultimate benefit, a quick return on investment.



We Invent Solutions.®

1-877-Shuert 1

Uni-Pallet® 44 x 48



Uni-Pallet is Shuert Industries' solution to distributor's needs: A lightweight, reusable, nine-leg, 4-way entry, twin sheet pallet. Manufactured from BA50-100, high-molecular weight, high-density polyethylene co-polymer for maximum product performance.

Pallet Dimensions				
A	Overall Length	48"	F Center Leg/Length	7.25"
B	Overall Width	44"	G Overall Fork Opening/Length	29.5"
C	Overall Height	6.5"	H Fork Opening/Width	13.250"
D	Fork Opening/Height	4"	I Center Leg/Width	5"
E	Fork Opening/Length	11.125"	J Overall Fork Opening/Width	31.5"

Warehousing & Shipping Information	
•	Pallets nest on 2.5" centers
•	Truckload Quantity: 1120 Pallets (53' x 98' x 110') 28 Stacks of 40 Pallets
•	Truckload Quantity: 1040 Pallets (48' x 98' x 110') 26 Stacks of 40 Pallets