

Uni-Pak® 1000mm X 1200mm



Outside Dimensions

O.D. = 1000mm X 1200mm X Height (available range = 457mm – 2134mm)

Outside dimension is measured from the floor to the top of the locating boss on the Top

Inside Usable Dimensions

Use the following formulas to build your own Uni-Pak and calculate I.U.D

Width and Length

$$1000\text{mm} - 68\text{mm} = 932\text{mm}$$

and

$$1200\text{mm} - 68\text{mm} = 1132\text{mm}$$

Container Height

Using a 768mm O.D. as an example

$$975\text{mm} - 224\text{mm} = 751\text{mm}$$

$$\text{I.U.D} = 932\text{mm} \times 1132\text{mm} \times 751\text{mm}$$

$$\text{Cubic Capacity} = 0.792 \text{ m}^3$$

DIMENSIONS ARE FOR REFERENCE ONLY

Uni-Pak® 1000mm X 1200mm

Dimensions for Nesting and Stacking Calculation

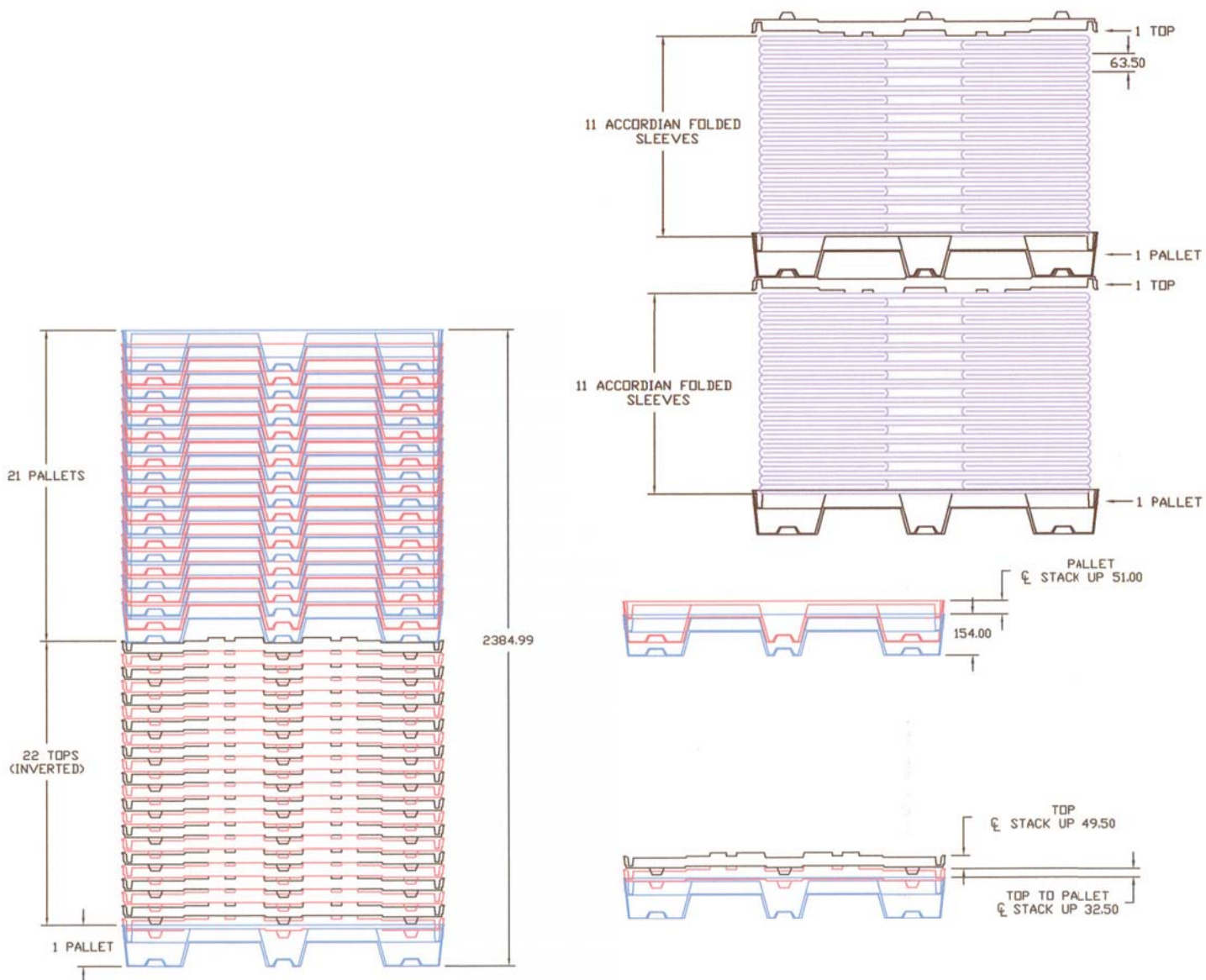
First Pallet on Floor: 154mm

Nested Pallet in Pallet: 51mm

First Top Nested in Pallet: 32.5mm

Nested Top in Top: 49.5mm

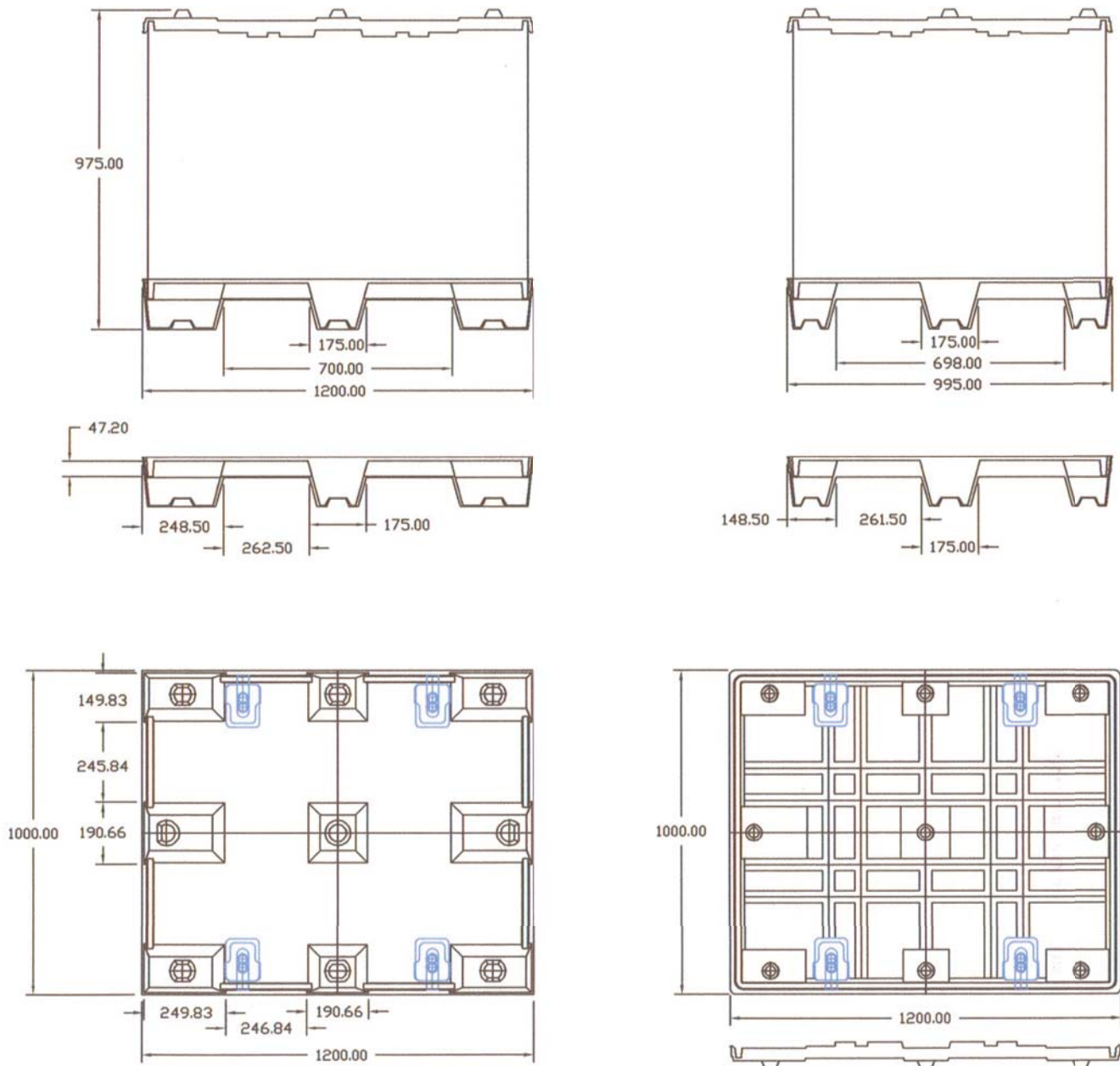
Sleeve (accordion folded in length dimension): 63.5mm



DIMENSIONS ARE FOR REFERENCE ONLY

Uni-Pak® 1000mm X 1200mm

Dimensions for Pallets and Tops



DIMENSIONS ARE FOR REFERENCE ONLY