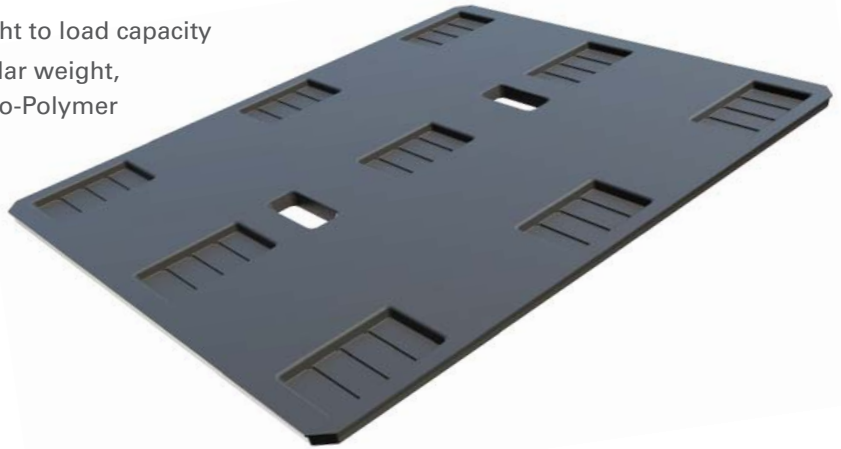


## Uni-Pallet® – Doubler System

Stacking loaded pallets for increased payload and extra cube can be a challenge. The Shuert Uni-Pallet Doubler System will aid you in evenly distributing the weight load when double stacking loaded pallets. The result will be a stable and safer stack while providing space-saving storage. The Shuert "Doubler" is manufactured using advanced thermoforming technology and the robust Twin Sheet construction ensures a cost effective solution that is lightweight, durable and easy to clean.

### "DOUBLER" DESIGN

- Twin Sheet construction with excellent weight to load capacity
- Manufactured from BA50-100, High-Molecular weight, High-Density food approved Polyethylene Co-Polymer
- Easy to clean flat deck surface
- New 45° Corner Design
- Available for the following Uni-Pallet sizes:  
40" X 48", 42" X 48", 44" X 48", 48" X 48"



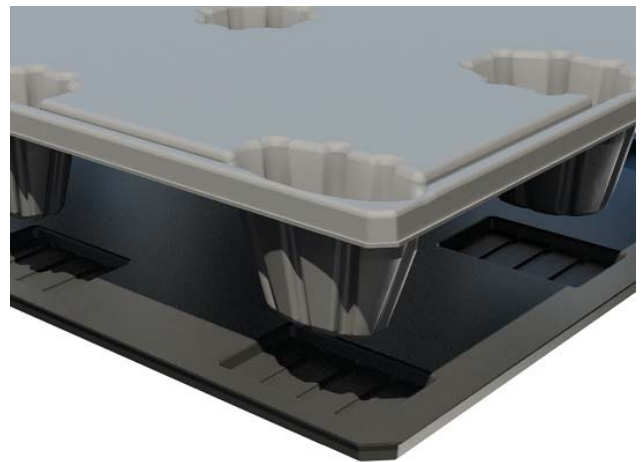
### "DOUBLER" FEATURES

- Lightweight for reduced shipping costs
- Allows stable, double stacking of product
- Conveyable
- Reusable for added cost savings
- Extremely Durable
- Impervious to weather, including extreme heat and cold
- No Heavy Metals - meets RoHS Directive 2002/95/EC
- Environmentally friendly and 100% recyclable
- ISPM 15 Compliant

### "DOUBLER" OPTIONS\*

- Steel inserts in short direction
- Custom Colors
- Identification Stripes
- Custom Embossing for improved asset control
- Fire Retardant – Halogen & Bromine Free

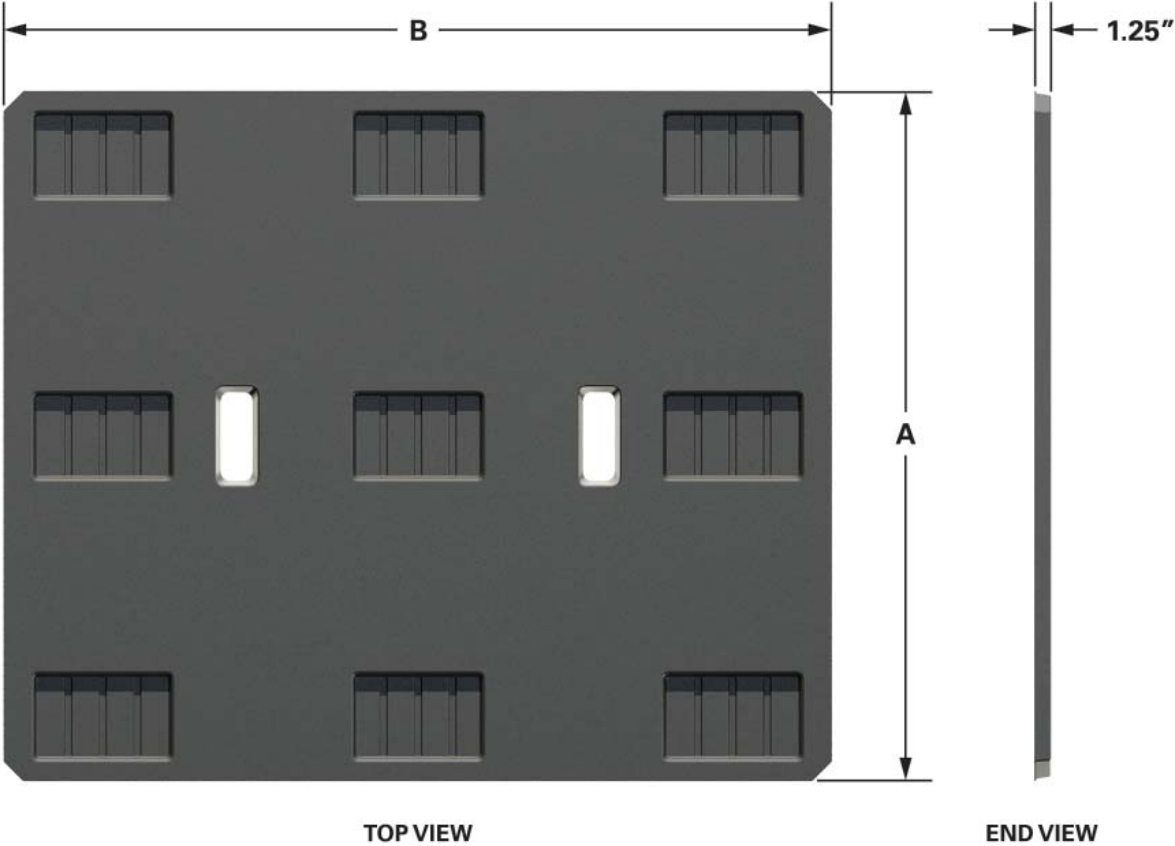
\*Available for larger volumes



We Invent  Solutions.®

[www.shuert.com](http://www.shuert.com)

# Uni-Pallet® – Doublor System



## SPECIFICATIONS

"A"		"B"		Weight		53' Truckload
in	mm	in	mm	lbs	kg	(53" X 98" X110")
40"	1016	48"	1219	12.00	5.44	2400
42"	1016	48"	1219	12.50	5.67	2400
44"	1016	48"	1219	13.00	5.90	2240
48"	1016	48"	1219	14.25	6.46	2080